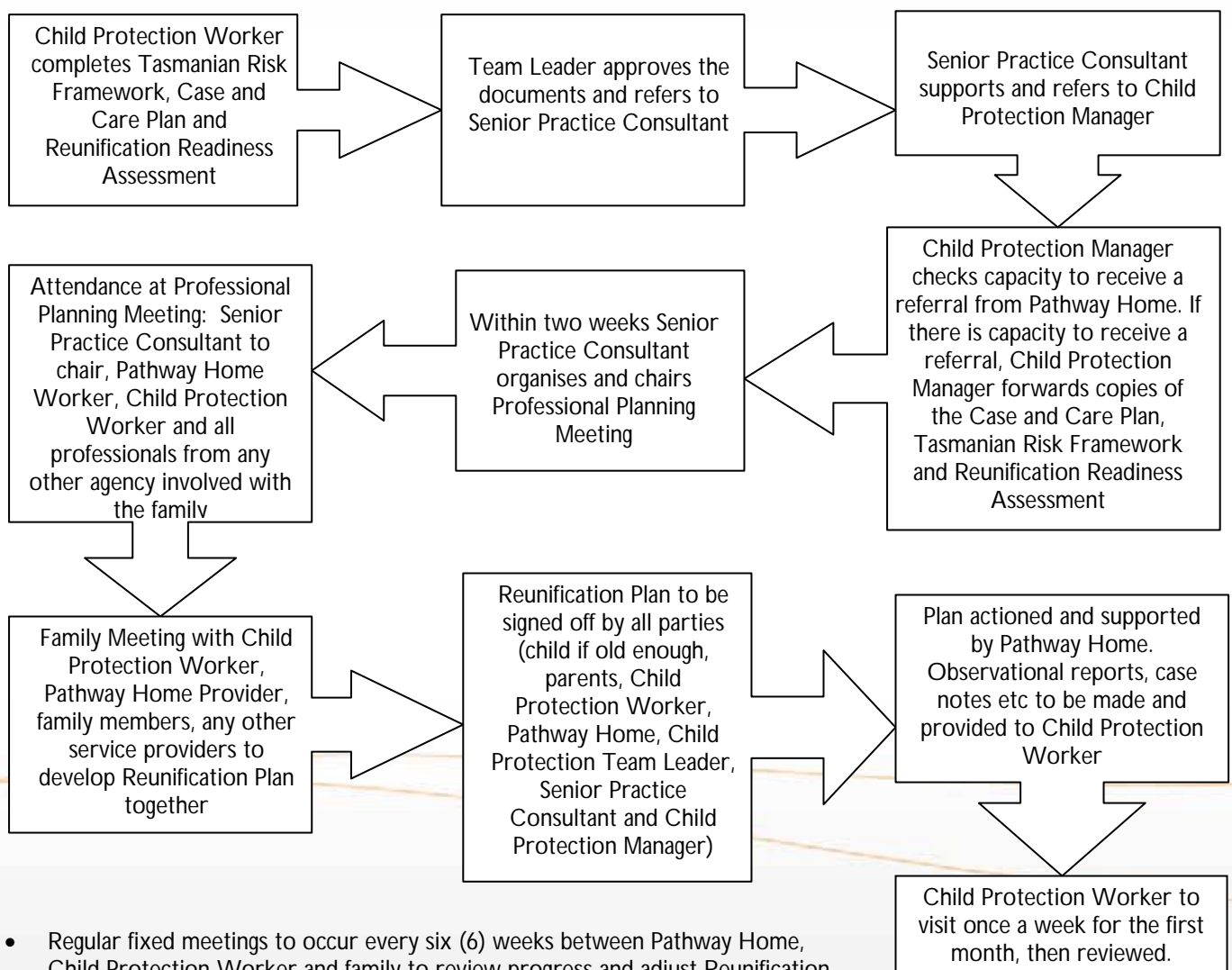




# Pathway Home and Child Protection

## Joint Management of Cases for Reunification



- Regular fixed meetings to occur every six (6) weeks between Pathway Home, Child Protection Worker and family to review progress and adjust Reunification Plan as necessary.
- When family progressed well enough, exit plan by Pathway Home Provider, to be signed off by all involved (Child Protection Services, Pathway Home Provider, Family, Child etc)